

User's Manual

USB 3.0 Portable Solid State Drive



ESD200

(Version 1.0)

 **Transcend[®]**

Table of Contents

| | |
|---|-----------|
| Introduction | 1 |
| Package Contents | 1 |
| Features | 2 |
| System Requirements | 2 |
| Safety Precautions | 4 |
| General Use | 4 |
| Backing up Data | 4 |
| Transporting | 4 |
| Power | 4 |
| Reminders..... | 5 |
| Product Overview | 5 |
| Connecting to a Computer | 6 |
| Disconnecting from a Computer | 8 |
| Windows® | 8 |
| Mac® OS | 9 |
| Linux® | 9 |
| Formatting the Solid State Drive | 10 |
| Windows® XP/Vista/7/8..... | 10 |
| Mac® OS | 11 |
| Linux® | 13 |
| Troubleshooting | 14 |
| Specifications | 16 |
| Transcend Limited Warranty | 17 |

Introduction |

Congratulations on purchasing Transcend's **ESD200**. This ultra-fast SuperSpeed USB 3.0 portable storage device is the perfect data management system for storing and transferring your data. With its shock-resistant design, huge storage capacity and real-world transfer speeds up to 10X faster than USB 2.0 (in USB 3.0 mode), the compact ESD200 is ideal for carrying your files, folders, documents, photos, music and videos. In addition, the ESD200 comes with very useful software* that can increase your mobile productivity. This User's Manual is designed to help you get the most from your new device. Please read it in detail before using the ESD200.

*Note: Transcend Elite software only works in Windows and Mac OS — please see the Software User's Manual for details.

Package Contents |

- USB 3.0 Portable Solid State Drive



- USB 3.0 Cable



- Travel Pouch



■ Quick Start Guide



■ Warranty Card



Features |

- SuperSpeed USB 3.0 compliant and backwards compatible with USB 2.0
- Connection bandwidth up to 5Gbits per second
- Extra-large storage capacity
- Sleek ultra portable design
- Easy Plug and Play operation – no drivers required
- USB powered – no external adapter necessary
- One Touch Auto-Backup button
- Includes **Transcend Elite** backup and security software
- Multicolor LED indicator (power, data transfer, & USB 2.0/3.0 connection type)

System Requirements |

Desktop or notebook computer with a working USB port.

One of following Operating Systems:

- Windows® XP
- Windows Vista®
- Windows® 7 / 8
- Linux® Kernel 2.6.31 or later
- Mac® OS X 10.4 or later

Safety Precautions |

These usage and safety guidelines are **IMPORTANT!** Please follow them carefully.

■ General Use

- Carefully unpack the contents of the ESD200 package.
- During operation, avoid exposing your ESD200 to extreme temperatures above 70°C, or below 0°C.
- Do not drop your ESD200.
- Do not allow your ESD200 to come in contact with water or any other liquids.
- Do not use a damp/wet cloth to wipe or clean the ESD200 exterior case.
- Do not store your ESD200 in any of the following environments:
 - Direct sunlight
 - Next to an air conditioner, electric heater or other heat sources
 - In a closed car that is in direct sunlight
 - In an area with strong magnetic fields or excessive vibration
- If your Windows computer will not boot while the ESD200 is connected, please disconnect the ESD200 from your computer first and reconnect the ESD200 after booting Windows. Otherwise, refer to your computer's manual and change the BIOS settings to instruct the computer to boot from a different device.

■ Backing up Data

- **Transcend does NOT take any responsibility for data loss, or damage during operation.** If you decide to store data on your ESD200 we strongly advise that you regularly backup the data to a computer, or other storage medium.
- To ensure SuperSpeed USB 3.0 data transfer rates when using your ESD200, please make sure that your computer has the relevant drivers and hardware to support USB 3.0. If you are unsure about how to check this, please consult the user's manual of your computer, motherboard, or USB 3.0 interface card for USB 3.0 driver information.

■ Transporting

- Do not pack the ESD200 into luggage without proper padded support. Other items in your luggage may damage the SSD during travel if it does not have proper protection.
- Avoid squeezing or compressing the ESD200.
- Do not place objects on top of your ESD200.

■ Power

- The ESD200 is powered directly via a computer USB port. However, the power supplied by the USB port on some older computers is below the 5V DC required to power the ESD200.
- Use only the USB 3.0 cable that came with the ESD200 to connect it to a computer, and always ensure that the cable you are using is in good condition. **NEVER** use a cable that is frayed or damaged.

- Ensure nothing is resting on the USB cable and that the cable is not located where it can be tripped over or stepped on.

■ Reminders

Always follow the procedures in the “**Disconnecting from a Computer**” section to remove the ESD200 from your computer.

Product Overview |



- A** Micro USB 3.0 Port
- B** One Touch Auto-Backup Button
- C** LED Indicator

Connecting to a Computer |

The ESD200 can be connected to your computer using either **USB 2.0** or **USB 3.0**. To get the best performance results from your SSD, we recommend using the USB 3.0 interface.



USB 3.0 Cable



ESD200 Micro USB port

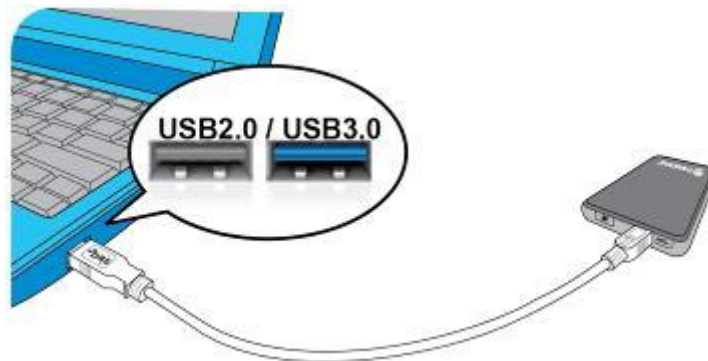



USB 2.0 Port



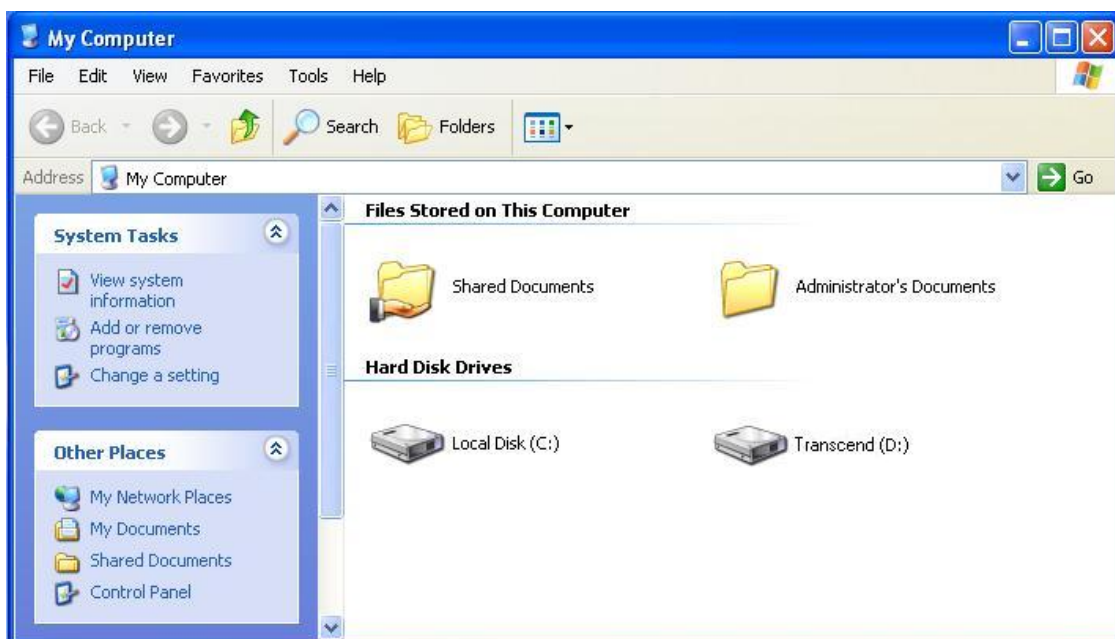
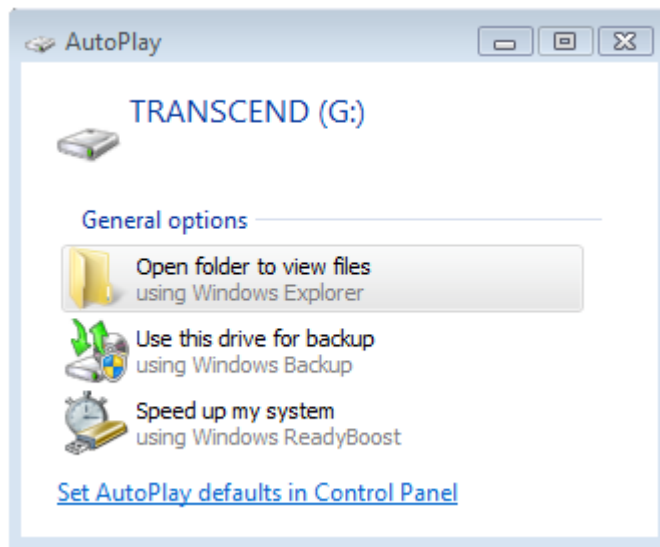
USB 3.0 Port

1. Plug the micro USB end (1) of the USB cable into the ESD200.
2. Plug the rectangular end (2) of the USB cable into an available USB 2.0 or USB 3.0 port on your desktop or notebook computer.



3. When the ESD200 is successfully connected to a computer, its LED will either light up green (USB 2.0) or blue (USB 3.0) to indicate the USB connection type. In Windows, a new **Local Disk** drive with a newly-assigned drive letter will appear, and a Removable Hardware icon  will appear in the Windows System Tray. The ESD200 comes pre-formatted with the FAT32 file system, which is compatible with most computer systems, including Windows, Mac, Linux, and more.

- Computers running Windows and Mac OS will automatically detect and install the ESD200. To use USB 3.0, please ensure your computer has all necessary USB 3.0 drivers installed, and make sure you plug the USB cable into the correct port on your computer (USB 3.0 ports are usually color-coded to differentiate them from USB 2.0)
- Linux users may have to configure the ESD200 manually. To do this, first create a directory for the ESD200 (Example: `mkdir /mnt/SSD`). Then, mount the ESD200 (Example: `mount -a -t msdos /dev/sda1 /mnt/SSD`)



Note: (D:) and (G:) above are example drive letters; the letter in your "My Computer" window may differ



Note: "New Volume" is an example drive. The drive name on your Mac computer may differ

4. Once connected, you can use the ESD200 as an external hard drive to transfer data to and from your computer. Simply drag and drop files or folders onto the **Local Disk, Volume, or drive letter** that represents the ESD200.
5. If you have installed the bundled Backup Manager software, you can press the ESD200's One Touch Auto-Backup Button to instantly backup your data (see the Backup Manager Software User's Manual for details).




One Touch Auto-Backup Button

Disconnecting from a Computer |

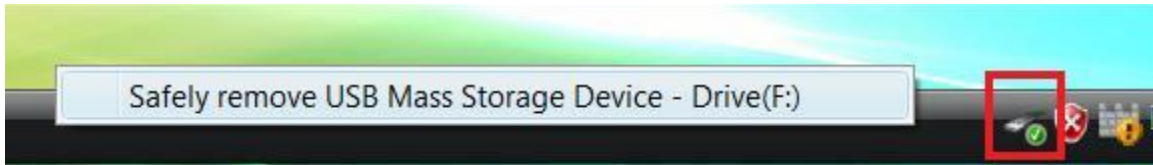


NEVER disconnect the ESD200 from a Computer when its LED is flashing.

■ Windows®


1. Left-click on the **Hardware**  icon on the system tray.
2. The **Safely Remove Hardware** pop-up window will appear. Confirm the correct **Drive** letter is displayed and select it to continue.





3. A window will appear stating, “The ‘USB Mass Storage Device’ device can now be safely removed from the system.” Then unplug your ESD200 from the USB port.



 **WARNING!** To prevent data loss, always use this procedure to remove the SSD from Windows®.

■ Mac® OS

Drag and drop the Disk icon that represents your ESD200 into the trashcan. Then unplug your ESD200 from the USB port.



■ Linux®

Execute **umount /mnt/Storejet** to un-mount the device. Then unplug your ESD200 from the USB port.

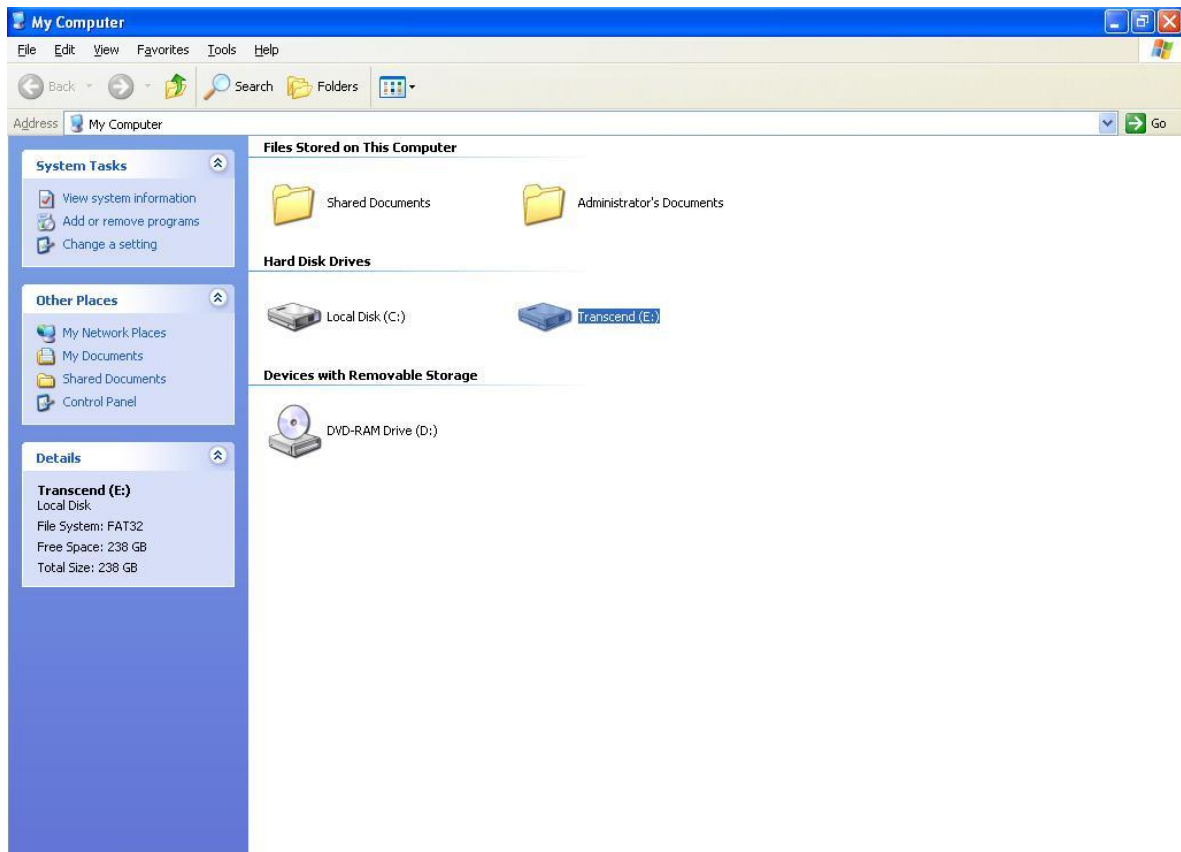
Formatting the Solid State Drive |

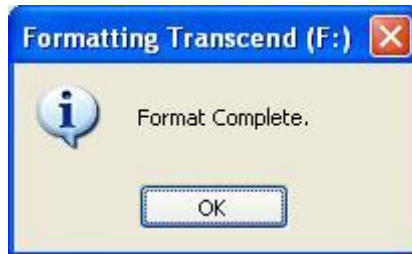
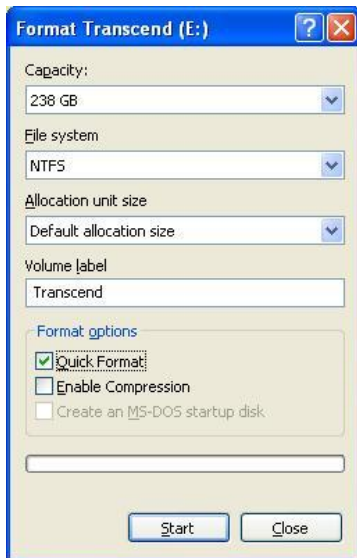


WARNING! Formatting the disk will erase all of the data on your ESD200.
You must have Administrator Rights to format in Windows.

■ Windows® XP/Vista/7/8

1. Plug the ESD200 into an available USB port on a Windows® XP/Vista /7/8 computer.
2. **Unplug all other USB storage devices from your computer.** This is to prevent accidentally formatting a different USB drive.
3. In the “My Computer” window, right-click the ESD200 drive icon, then choose “Format”.
4. You may choose “Quick Format” or change the volume label if desired.
5. Click “OK” to begin formatting. All data on the disk will be erased.



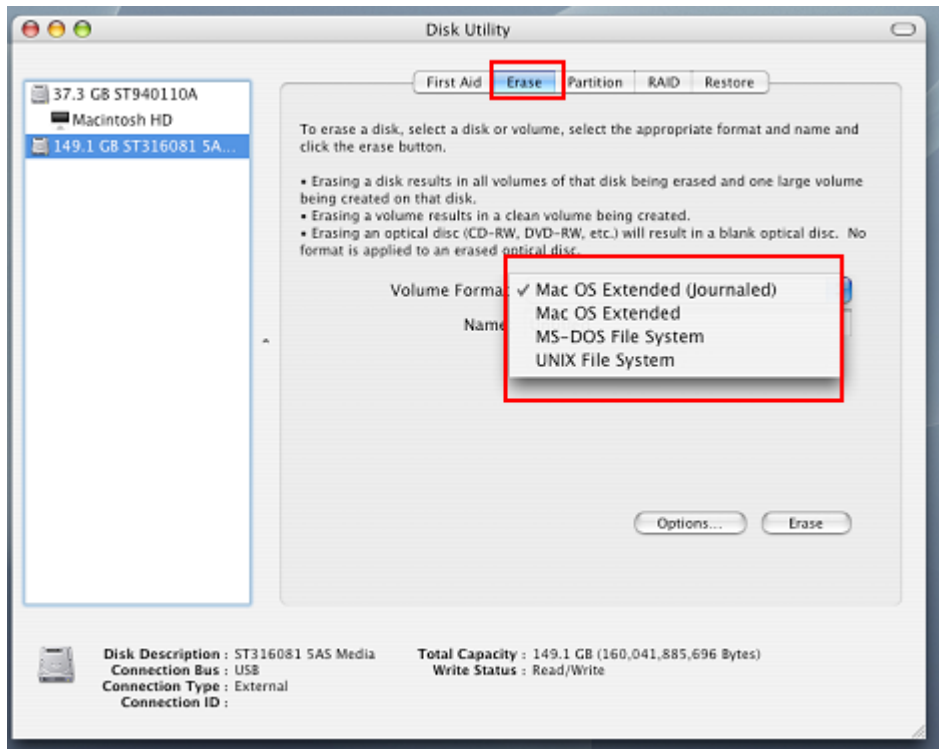


■ Mac® OS

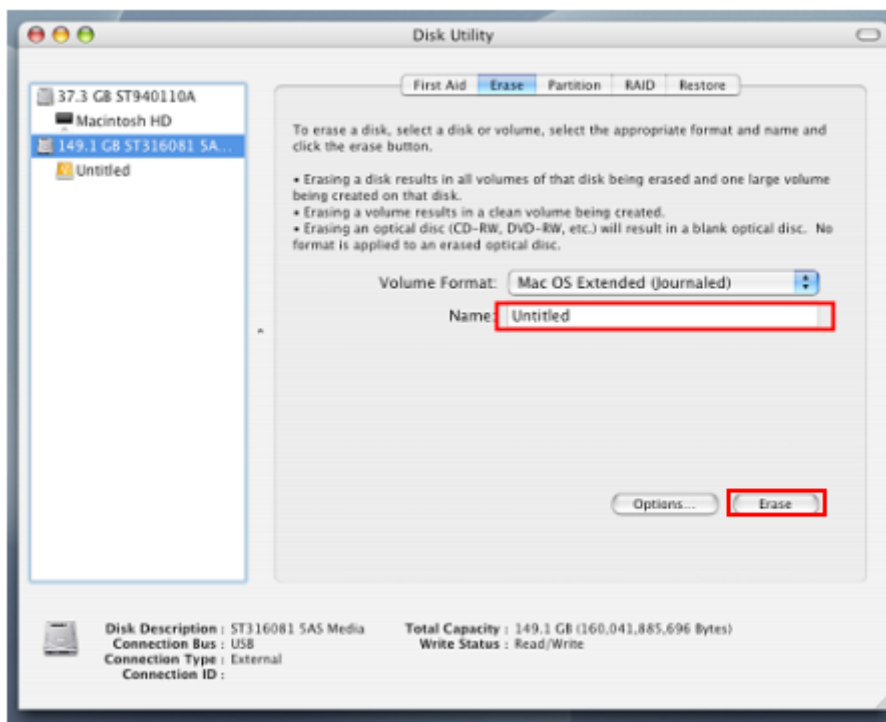
1. Plug the ESD200 into an available USB port on your MAC computer.
2. **Unplug all other external storage devices from your computer.** This is to prevent accidentally formatting a different drive.
3. If a message window appears like the one below, click the “Initialize” button. If no message appears, go to “**Applications > Utilities** “ to open “Disk Utility”



4. In the Disk Utility window, choose your ESD200 from the list on the left.
5. Select the “Erase” tab.
6. Choose the Volume Format you want (Mac OS Extended (Journaled) is recommended).



7. Input a name for your new drive (otherwise, your drive will be named “Untitled”)
8. Click the “Erase” button in the bottom right corner of the window



9. Click “Erase” again to confirm.



10. Click the “**Close**” button to finish and exit.

■ Linux®

1. Plug the ESD200 into an available USB port on your Linux computer.
2. **Unplug all other USB storage devices from your computer.** This is to prevent accidentally formatting a different USB drive.
3. Type **fdisk /dev/sda** (replace /dev/sda with your actual USB device)
4. Press **p**
5. Press **n**
6. Press **w**
7. Type **mkfs.ext3 /dev/sda1**
8. Go to **/etc/fstab** and add: **/dev/sda1 /mnt/usbdrive auto user,noauto 0 0**
9. Type **mkdir /mnt/usbdrive**
10. Type **mount /mnt/usbdrive**

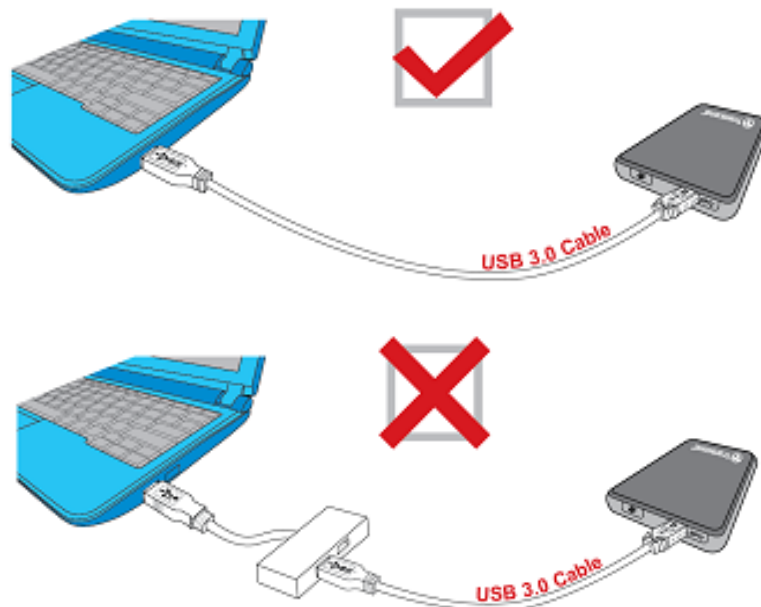
Troubleshooting |

If a problem occurs with your ESD200, please first check the information listed below before taking your ESD200 in for repair. If you are unable to remedy a problem after trying the following suggestions, please consult your dealer, service center, or local Transcend branch office. We also have FAQ and Support services on our website at www.transcend-info.com.

■ **My operating system cannot detect the ESD200**

Check the following:

1. Is your ESD200 properly connected to the USB port? If not, unplug it and plug it in again. If it is properly connected, try using another available USB port.
2. Are you using the USB 3.0 cable that came in the ESD200 package? If not, try using the Transcend USB 3.0 cable to connect the ESD200 to your computer. Using a USB cable other than the one supplied may not provide stable transfer ability.
3. Is your ESD200 connected to a Mac[®] Keyboard? If so, unplug it and plug it into an available USB port on your Mac[®] desktop computer.
4. Is the USB port enabled? If not, refer to the user's manual of your computer (or motherboard) to enable it.
5. Avoid connecting the ESD200 through a USB hub.



■ **The ESD200 does not power on**

Check the following:

1. Ensure that the ESD200 is properly connected to the USB port on your computer.
2. Ensure that the USB port is working properly. If not, try using an alternate USB port.

■ **I installed an OS onto the ESD200. Why can't I boot from it?**

Some computers do not support operating system boot up from a USB drive.

■ **I cannot copy large files to the ESD200**

1. Is there enough available disk space?
2. Is the file larger than 4GB? If so, please see below:

The ESD200 default file system is FAT32, which allows it to be recognized on most types of computers, game consoles and media playback devices. However, *the FAT32 file system does not support large files that exceed 4GB in size*. If you plan to store large files that are larger than 4GB, you will need to convert the drive to a different file system such as NTFS. Please see the “Formatting the Solid State Drive” section of this manual for instructions on how to re-format the ESD200.

Note: Transcend provides a File System Conversion Utility to convert the file system from FAT32 to NTFS. Please visit <http://www.transcend-info.com/Support/> to download the tool.

■ **I'm having problems with the ESD200 on my Mac®**

If you previously formatted your ESD200 in Windows®, it is most likely formatted with the Windows NTFS file system, which may not be 100% compatible with Mac® OS. To store and backup data on your Mac® please see the “Formatting the Solid State Drive” section of this manual to convert the drive to a Mac OS compatible file system. If you plan to regularly use the drive with both Windows and Mac computers, we recommend formatting the drive to the FAT32 file system (the ESD200 comes pre-formatted with FAT32 from the factory). Keep in mind that **formatting the drive will erase all existing data on the drive.**

Note: To keep existing data, you will need to use a Windows or Mac computer that can detect the ESD200 to make a backup copy of all essential files.

■ **I cannot detect the ESD200 in Linux®**

If you previously formatted the ESD200 a Windows or Mac computer, it is most likely formatted with a file system that is not compatible with Linux. To solve this problem, please follow the instructions on [formatting the ESD200 in Linux](#). However, please be aware that **formatting the drive will erase all existing data on the drive.**

Note: To keep existing data, you will need to use a Windows or Mac computer that can detect the ESD200 to make a backup copy of all essential files.

Specifications |

| | |
|------------------------------|--|
| Size (L x W x H) | 92mm x 62mm x 10.5mm |
| Weight | 56g |
| Storage Media | NAND Flash |
| Power Supply | 5V DC supplied from the USB port |
| Transfer Speed | USB 3.0 : Up to 5Gb/s USB 2.0 : Up to 480Mb/s |
| Operating Temperature | 0°C (32°F) to 70°C (158°F) |
| Certificates | CE, FCC, BSMI |
| Warranty | 3 Years |

Transcend Limited Warranty |

This product is covered by a Three-year Limited Warranty. Should your product fail under normal use within three years from the original purchase date, Transcend will provide warranty service pursuant to the terms of the Transcend Warranty Policy. Proof of the original purchase date is required for warranty service. Transcend will inspect the product and in its sole discretion repair or replace it with a refurbished product or functional equivalent. Under special circumstances, Transcend may refund or credit the current value of the product at the time the warranty claim is made. The decision made by Transcend shall be final and binding upon you. Transcend may refuse to provide inspection, repair or replacement service for products that are out of warranty, and will charge fees if these services are provided for out-of-warranty products.

Limitations

Any software or digital content included with this product in disc, downloadable, or preloaded form, is not covered under this Warranty. This Warranty does not Apply to any Transcend product failure caused by accident, abuse, mishandling or improper usage (including use contrary to the product description or instructions, outside the scope of the product's intended use, or for tooling or testing purposes), alteration, abnormal mechanical or environmental conditions (including prolonged exposure to humidity), acts of nature, improper installation (including connection to incompatible equipment), or problems with electrical power (including undervoltage, overvoltage, or power supply instability). In addition, damage or alteration of warranty, quality or authenticity stickers, and/or product serial or electronic numbers, unauthorized repair or modification, or any physical damage to the product or evidence of opening or tampering with the product casing will also void this Warranty. This Warranty shall not apply to transferees of Transcend products and/or anyone who stands to profit from this Warranty without Transcend's prior written authorization. This Warranty only Applies to the product itself, and excludes integrated LCD panels, rechargeable batteries, and all product accessories (such as card adapters, cables, earphones, power adapters, and remote controls).

Transcend Warranty Policy

Please visit <http://www.transcend-info.com/Support/> to view the Transcend Warranty Policy. By using the product, you agree that you accept the terms of the Transcend Warranty Policy, which may be amended from time to time.

Online registration

To expedite warranty service, please access www.transcend-info.com/register to register your Transcend product within 30 days of the purchase date.